



HOMESPACE 2018

Workforce Development

Gill Genet 5th July

1. Workforce development

Workforce report: Spreading our wings - developing the home and community workforce to support the needs of people, their whānau and family

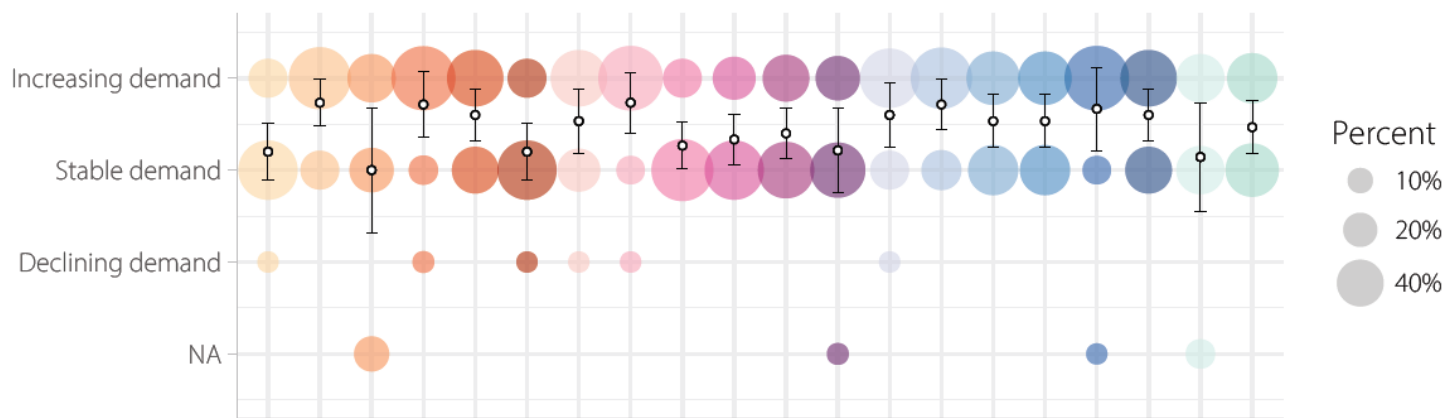
2. Qualifications Pathway Review 2018

Workforce development

- Address complexity
- Meet population pressures and changing demographics
- Meet demand for services
- Prepare for the introduction of individual care packages
- Utilise technology and AI
- Work collaboratively
- Provide a culturally appropriate service
- Support the workforce to be competent communicators
- Support the workforce to be technically literate

Training needs based on demand

Impact of clients' needs on demand for training. (n=15)

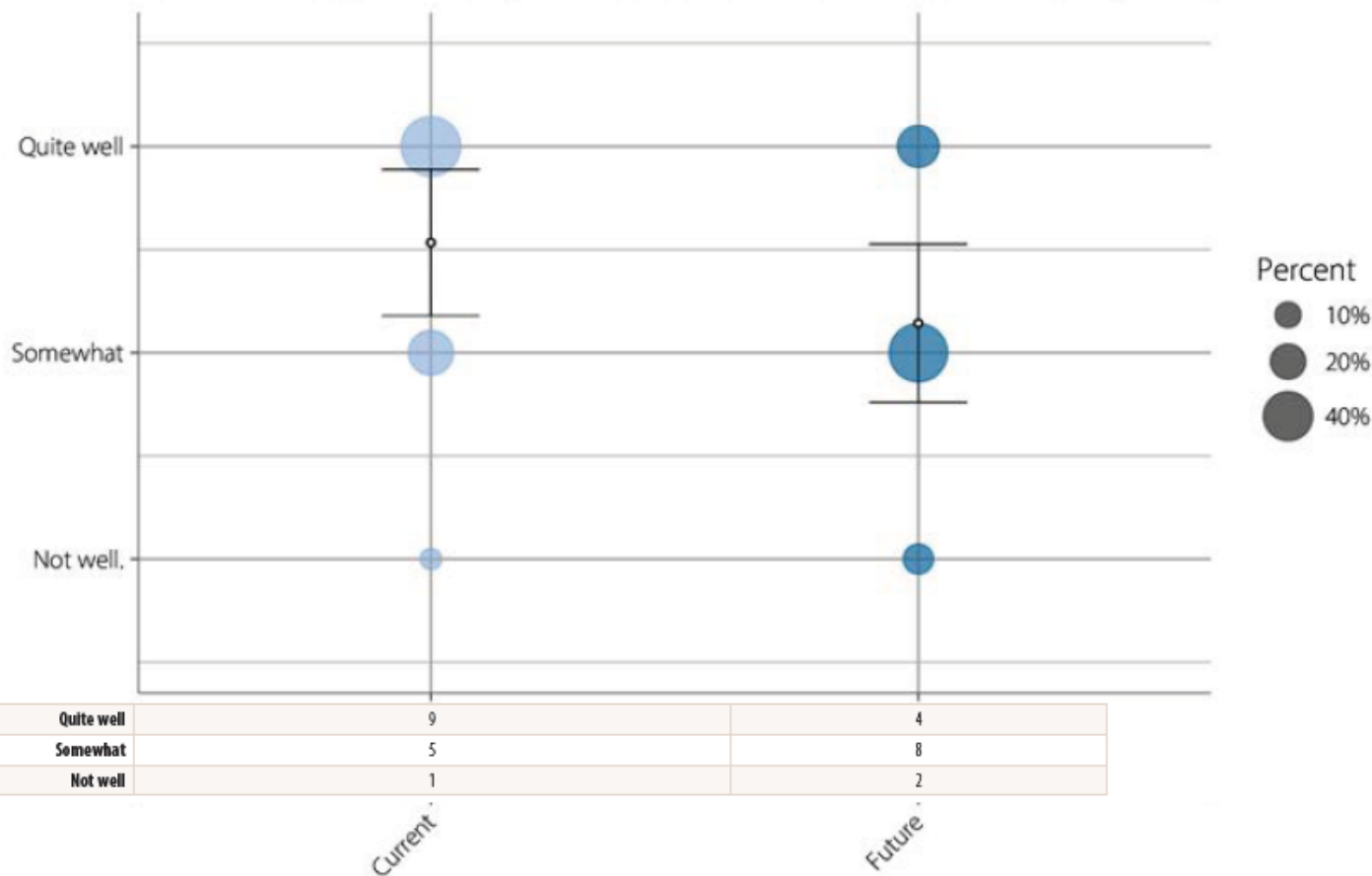


NOTE: table is count (n=) not %	Increasing demand (n=)	4	11	6	11	9	4	9	12	4	5	6	5	10	10	8	8	12	9	6	7	
	Stable demand (n=)	10	4	5	2	6	10	5	2	11	10	9	8	4	4	7	7	2	6	6	8	
	Declining demand (n=)	1			1	1	1	1	1						1							
	NA (n=)			3									1						1		2	

Frailty, mild disability
 Specific chronic conditions
 Specific injury
 Medication support
 General Rehabilitation
 Obesity
 Incontinence
 Cognitive decline
 General Disability
 Specific Disability
 Specific Disability
 Facilitation/navigation/advocacy
 Support with IF
 Palliative care
 Isolation/loneliness
 Lack of mobility
 Household challenges
 Mental Health
 Cultural/social connections
 Addiction/post-addiction
 Poverty

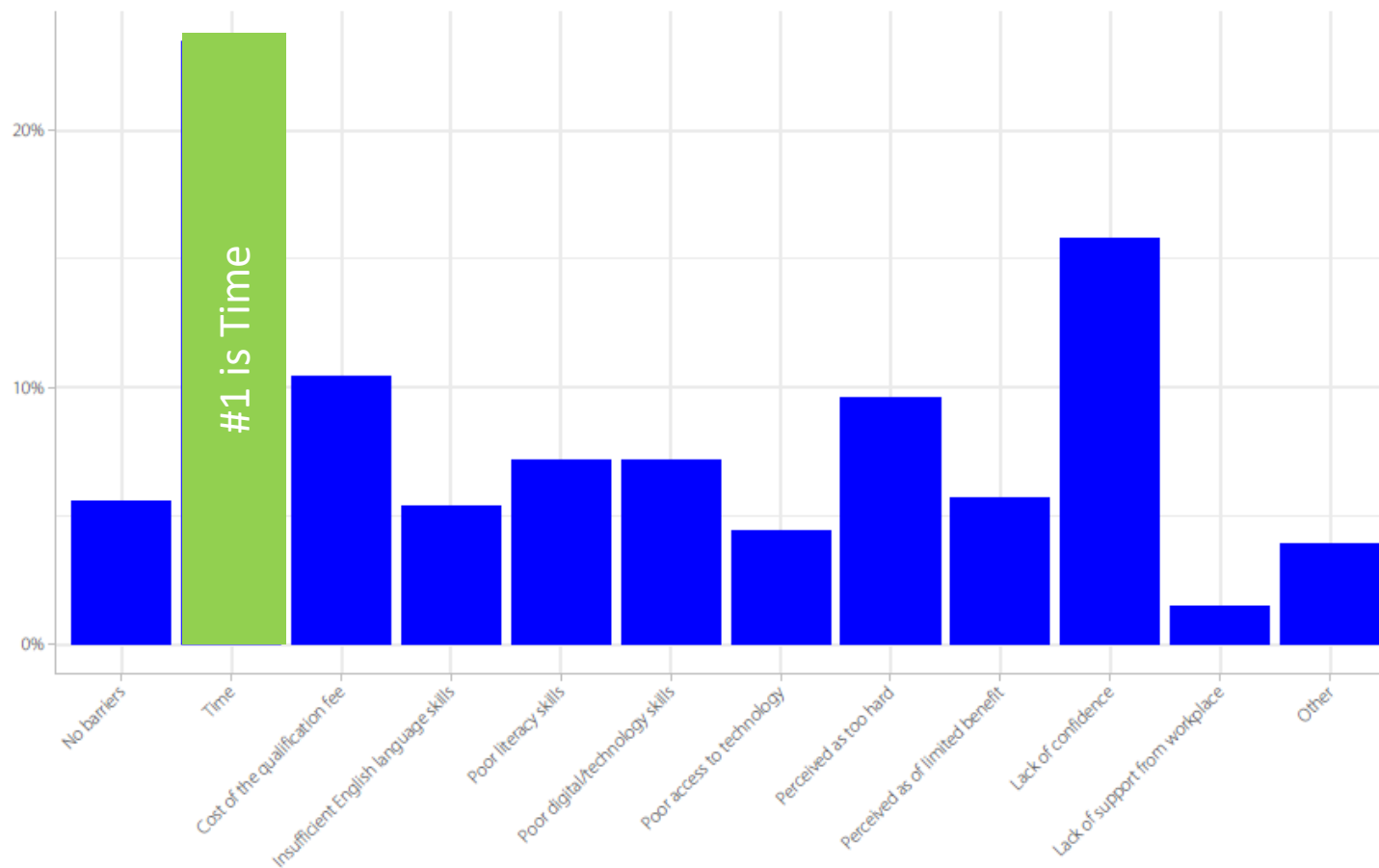
Knowledge of clients' needs

How well do you know your clients' current and future needs (n=14)



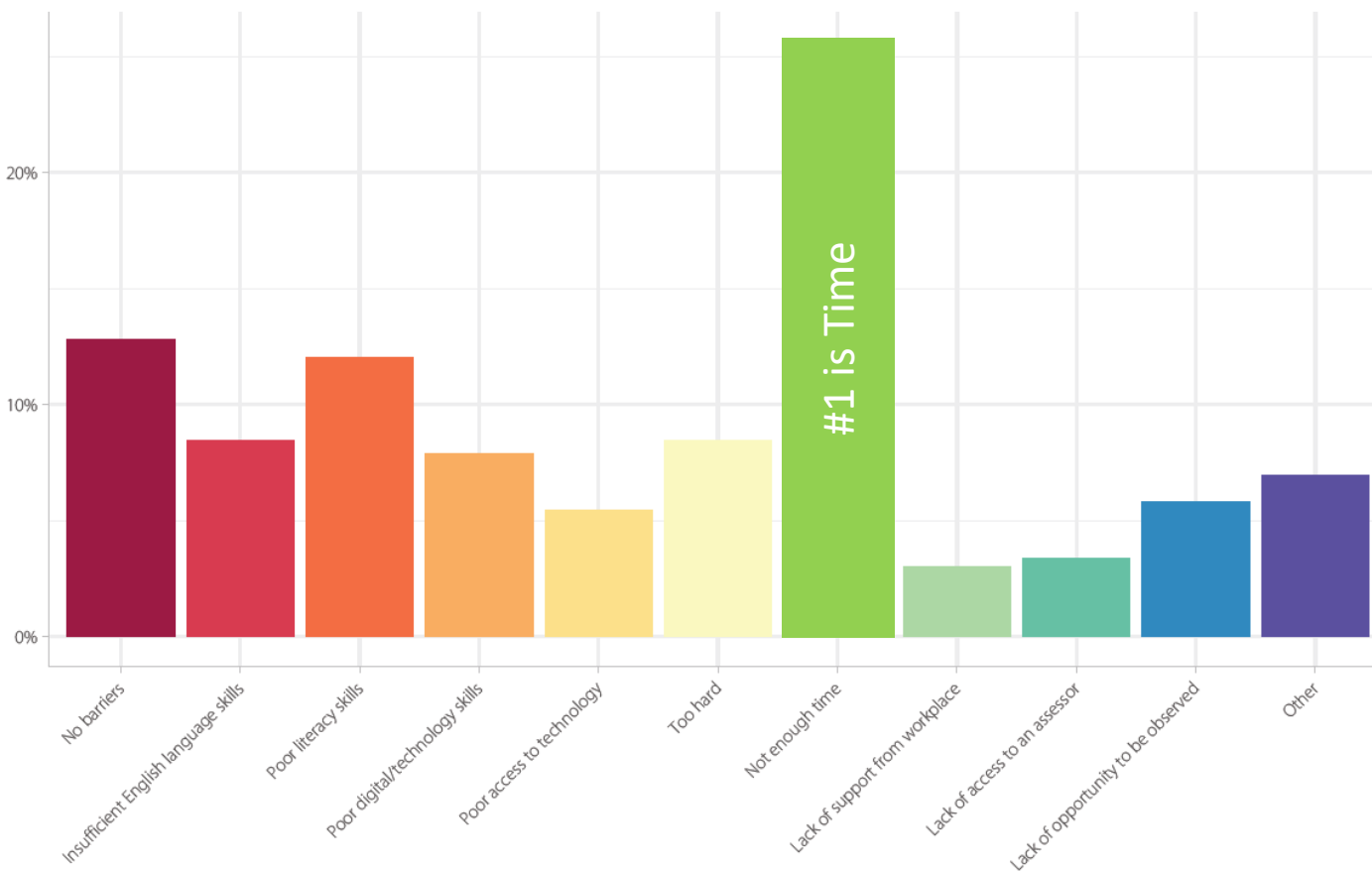
Barriers to starting training

Top three barriers to starting training (n=614)



Barriers to completing training

Top three barriers to completing training (n=531)



Qualifications Pathway Review

Group 1

- H & W level 2
 - H & W level 3
 - H & W level 4 – Advanced Support
-
- Now Programme provider consultation
 - Sept - Nov Qualification review
 - Dec Submission to NZQA
 - 2019 Programme review group 1
 - 2019 Qualification review group 2